

# RAFAEL CHAVEZ TORRES

VALES Y MAZURKAS  
para banda

## CLARINETE II-III EN SI $\flat$

CRISTINA - GRAN VALS  
CLEMENCIA - VALS  
CARLOTA - VALS  
MANUELITA - MAZURKA  
LOLITA - MAZURKA

ALESSANDRO BARES  
Edición crítica



FA  
Facultad de  
Artes

EAM  
Escuela de  
Artes Musicales

# CRISTINA - GRAN VALS

Rafael Chavez Torres

## Introducción. Andante

9 *p* *f* *p* *f*

9 *aprieta* *pp* *cresc.*

15 *f* *ff* *p* **1er Tiempo**

20 *ten.* *f*

25

30 *pp* *ff*

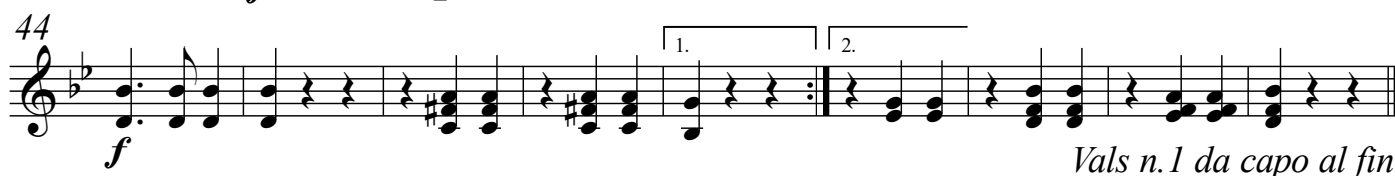
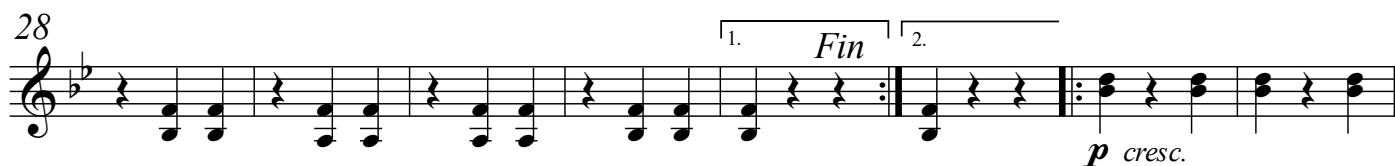
Detailed description: The introduction is in 3/4 time, key of B-flat major. It begins with a melody in the right hand, marked *p* and *f*, with a crescendo. The left hand plays a steady eighth-note accompaniment, marked *pp* and *cresc.*. At measure 15, the tempo changes to '1er Tiempo' (first time). The melody continues with a *f* and *ff* dynamic, while the accompaniment is marked *p*. The piece ends with a *ten.* (tension) marking and a final *f* dynamic.

## Vals n.1

10 *p* *cresc.* *f* *p*

19 *cresc.* *ten.* *p*

Detailed description: 'Vals n.1' is in 3/4 time, key of B-flat major. It features a melody in the right hand and a steady eighth-note accompaniment in the left hand. The melody is marked *p*, *cresc.*, *f*, and *p*. The accompaniment is marked *cresc.* and *ten.* (tension), ending with a *p* dynamic.



## Vals n.2



*Vals n.2 dal segno § al fin*

## Vals n.3

ff pp

7 *rall.* [a tempo] *ff* *p*

16 *p* *f* *p*

25

34 *f* *f* *p* *f* 1. *Fin*

2.

51 *f* 1. 2.

*Vals n.3 da capo al fin*

## Vals n.4

*p* *cresc.*

8 *f* *p* *cresc.*

15 *f* *p*

22 *Fin*

*f*

29 *ff* *p*

37 *f* *p* *ff*

Vals n.4 da capo al fin

## Coda

*ff*

10 *rall.* [a tempo] *f*

19

30

40 *pp*

51

60 *ff* *ppresc.* *ff*

69

# CLEMENCIA - VALS

Rafael Chavez Torres

# Introducción. Larghetto

Musical score for "The Firebird" by Igor Stravinsky, featuring a piano and a string ensemble. The score is in 3/4 time, key of D major, and consists of 35 measures. The piano part is marked with dynamics like *p*, *ff*, *fff*, and *pp*. The string ensemble part is marked with dynamics like *ff* and *fff*. The score includes various musical notations such as triplets, slurs, and accents.

# Vals n.1

**Vals n.1**      %

11 *p* *rall.* [*a tempo*] *p*

21 *ff*

*Vals n.1 dal segno § al fin*

The first staff of music is in treble clef, key of D major (two sharps), and 3/4 time. It begins with a piano (*p*) dynamic marking. The melody consists of eighth and quarter notes, with rests, and includes a sharp sign (#) above the second measure.

*Vals n.2 da capo al fin*

## Vals n.3

10

17

24

32

40

46

1. *Fin* 2.

*Vals n.3 da capo al fin*

## Vals n.4

8

15

*p cresc.* *ff*<sup>3</sup> *p*

*f* *p* *f* *p*

*cresc.* *f*

1. 2. *ritard.*



22 *a tempo*

*p*

30

38 *f* *ff*

47 1. *rall.* 2.

## Final [o Coda]

*ff*

10 *rall.* *[a tempo]* *p* *ff*

18

28

38

47 *seco* *pp* *ff*

## CARLOTA - VALS

Rafael Chavez Torres

## Introducción. Andante moderato

7

11

15

19

**Allegro moderato**

*muriendo* *ff* *pp* *ff* *seco*

## Vals n.1

10

19

29

*p* *cresc.* *mf* *p* *ritard.* *a tempo* *f* *ff* *Fin* *ff* *p*

38 *p* *rall.* *cresc.*

47 *a tempo* *f* *p*

57 *ff* *Vals n.1 da capo al fin*

## Vals n.2

*ff* *ritard.* *pp* *[a tempo]* *pp*

10 *ten.*

19 *p*

28 *cresc.*

37 *f* *ff*

45 *pp*

54 *ff*

63 *rall.* *a tempo*

## [Vals n.3]

Musical score for Vals n.3, measures 1-26. The key signature is two flats (Bb, Eb) and the time signature is 3/4. The score consists of five staves. Measures 1-6 are marked *p*. Measures 7-12 are marked *p*. Measures 13-19 are marked *p*. Measures 20-25 are marked *ff*. Measure 26 ends with a double bar line.

## Final

Musical score for Final, measures 1-27. The key signature is two sharps (F#, C#) and the time signature is 3/4. The score consists of five staves. Measures 1-6 are marked *ff*. Measures 7-12 are marked *ff*. Measures 13-19 are marked *pp*. Measures 20-26 are marked *cresc.*. Measure 27 ends with a double bar line.

34 *p* *f* ritard.

40 [a tempo] *ff*

46 *p* *p cresc.* più vivo

53 *ff* *p cresc.*

59 *ff*

66 *pp* *fff* seco

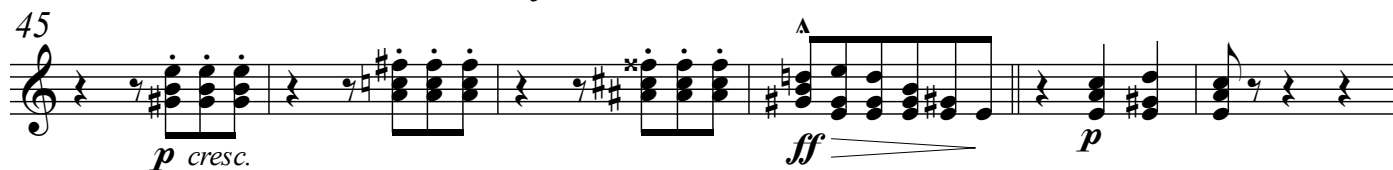
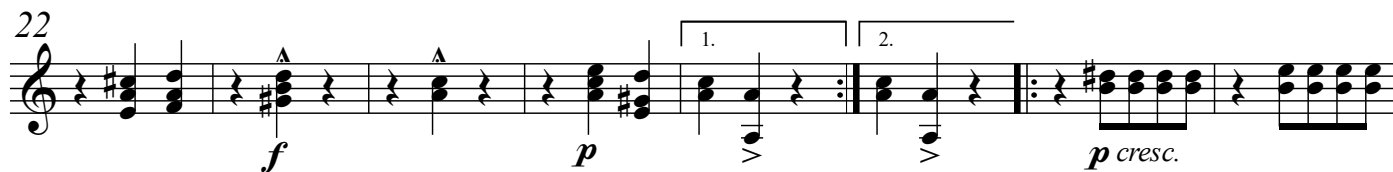
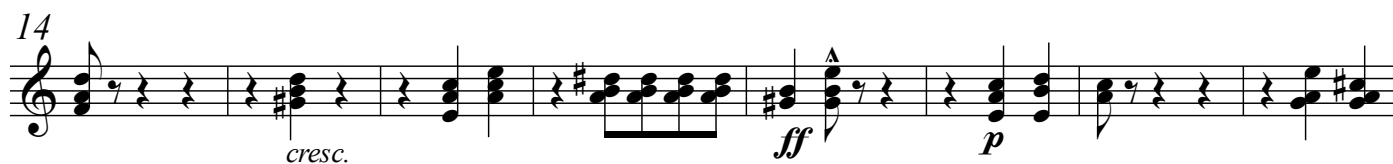
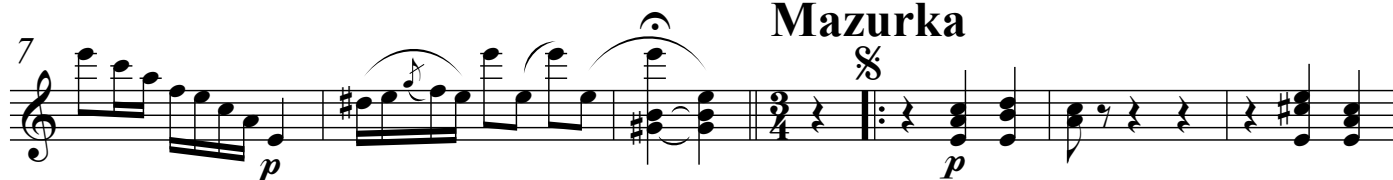
# MANUELITA - MAZURKA

Rafael Chavez Torres

## Introducción. Adagio



## Mazurka



## Trio

65

*p*

71

78

*f* *p*

85

*f*

92

*p*

99

*ff* 3 *ff* 3

104

3 *p*

110

117

*f* *p*

124

131

*ff*

1. 2. A

Mazurka dal segno  $\text{S}$  al fin

# LOLITA - MAZURKA

Rafael Chavez Torres

Musical score for **Lolita - Mazurka** by Rafael Chavez Torres. The score is in 3/4 time, key of B-flat major, and consists of 63 measures.

The score includes the following dynamic markings and articulation:

- Measures 1-4: *pp* (pianissimo), accents on measures 1, 3, and 4.
- Measures 5-8: *cresc.* (crescendo), *f* (forte) at measure 8.
- Measures 9-12: *p* (piano) at measure 10, accents on measures 10, 11, and 12.
- Measures 13-16: *ff* (fortissimo) at measure 14, *p* (piano) at measure 15.
- Measures 17-20: *f* (forte) at measure 18, *p* (piano) at measure 19.
- Measures 21-24: *f* (forte) at measure 22, *p* (piano) at measure 23.
- Measures 25-28: *pp* (pianissimo) at measure 26, *cresc.* (crescendo) at measure 28.
- Measures 29-32: *f* (forte) at measure 30, *p* (piano) at measure 31.
- Measures 33-36: *f* (forte) at measure 34, *p* (piano) at measure 35.
- Measures 37-40: *f* (forte) at measure 38, *p* (piano) at measure 39.
- Measures 41-44: *f* (forte) at measure 42, *Fin* (Finis) at measure 44.

The score includes a **Trio** section starting at measure 49. The Trio section consists of 14 measures (49-62) and includes the following dynamic markings and articulation:

- Measures 49-52: *pp* (pianissimo) at measure 50, accents on measures 50, 51, and 52.
- Measures 53-56: *ff* (fortissimo) at measure 54, *p* (piano) at measure 55, *f* (forte) at measure 56.
- Measures 57-60: *pp* (pianissimo) at measure 58, *p* (piano) at measure 59, *f* (forte) at measure 60.
- Measures 61-62: *p* (piano) at measure 61, *Fin* (Finis) at measure 62.

The score ends with the instruction **Mazurka da capo al fin**.